

# Ampatex® Ombrello

Self-adhesive vapour check and weather protection



Product information



[ombrello.ampack.biz](http://ombrello.ampack.biz)

# Ampatex® Ombrello

## Self-adhesive vapour check and weather protection

- 1 Ampacoll® Ombrello**  
Weather protection/  
construction period cover,  
fully self-adhesive



### Area of application

Transparent, full-surface adhesive vapour check and weather protection membrane. Used, for example, to temporarily cover wooden ceilings during the transport, assembly and construction phase or to ensure airtightness on wooden materials and other substrates.

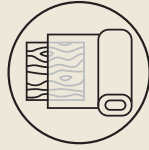
Delivery forms		
Article number	Description	Roll dimensions
7640442091384	Ampatex® Ombrello	1,5 m × 50 m = 75 m <sup>2</sup>
7640442091575	Ampatex® Ombrello	750 mm × 50 m = 37,50 m <sup>2</sup>
7640442091599	Ampatex® Ombrello	375 mm × 50 m = 18,75 m <sup>2</sup>

Technical details	Value	Standard
s <sub>d</sub> value	5 m	EN 12572 C
Weight	160 g/m <sup>2</sup> (± 10%)	EN 1849-2
Tear resistance	longitudinal	110 N / 5 cm
	transverse	100 N / 5 cm
Tear elongation	longitudinal	60%
	transverse	80%
Resistance to further tearing (nail shaft)	longitudinal	80 N
	transverse	80 N
Fire performance	E	EN 13 501-1
Fire performance (CH)	RF 3 (cr)	VKF
Waterproofing at 2 kPa	passed	EN 1928
Width of overlap	≥ 10 cm	
Straightness	< 75 mm / 10 m	EN 1848-2
Temperature resistance	-40 – +80 °C	
Remains durable after artificial ageing	passed	EN 1296
Outdoor weathering, pitched roof > 10° and wall	3 months	
Outdoor weathering, ceiling	1 month	



\*Conditions for the twenty-year premium warranty include registering the building object and the Ampack products used. In addition, our products must be used as part of a system. For further details, please see our General Warranty Conditions.

# Your product advantages



Transparent: furring, chalklines, penetrations, etc. remain visible



Adhesive made of UV acrylate: moisture does not affect the adhesive



- 1** Double layer for even better weather protection and maximum safety
- 2** Transparent white fleece
- 3** Adhesive made of UV acrylate
- 4** Sturdy peel-off film with divider: 25cm/125cm



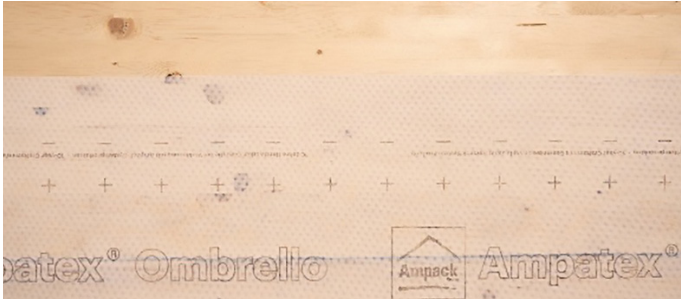
Natural weathering period of 3 months: sufficient time for construction phase (pitched roof > 10° and wall: 3 months, ceiling: 1 month)



Easy to install and non-slip: for faster work and safe walking during the construction phase

# Installation

Install on the construction site with two or three persons. Tip: In windy conditions, work with the wind direction. Important: Ensure adequate drainage when applying on horizontal or flat components. Protect the membrane from mechanical damage. Ensure cleanliness on the construction site. Cover exposed areas such as walkways if necessary. **Ampatex® Ombrello** is a temporary weather protection solution and is not intended for flatroof waterproofing.



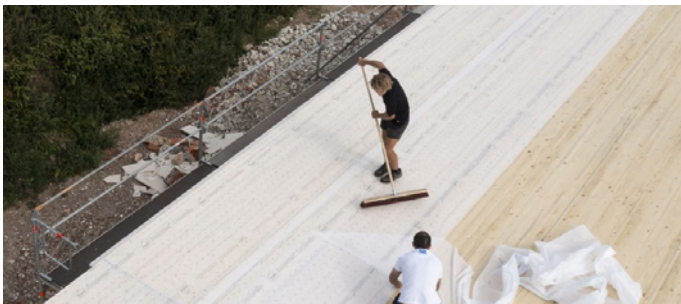
## 1 Check surface

Before applying the tape, any pointed or sharp edges and objects such as stones, wood splinters, etc. must be removed. Ensure that the substrate is clean, dry and free of dust, ice and grease.



## 2 Position membrane

Roll out the membrane so far that it can be aligned. Align **Ampatex® Ombrello** with the markings, imprint or chalkline. Overlap **Ampatex® Ombrello** by at least 10 cm. Note the dashed overlap line for this. It is best to peel off the narrow cover strip first and thereby fix the membrane in the desired position over the entire length.



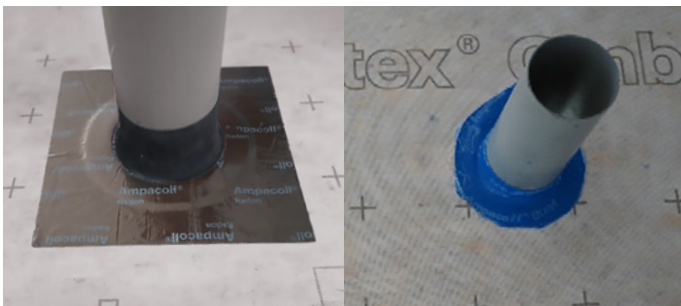
## 3 Apply adhesive

Then peel off the wide cover strip. While peeling off, rub the membrane well on the surface with a soft broom or similar. Apply pressure to overlapping areas in particular, e.g. with a pressure roller.



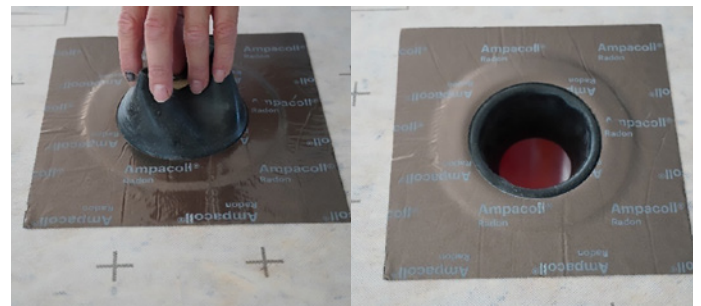
## 4 Connections

For panel joints and connections, use **Ampacoll® Flexx pro** 150 mm. Substrates may have to be pre-treated with **Ampacoll® Primax** or **Ampacoll® Airmax**.



## 5 Penetrations

Penetrations are best sealed with **Ampacoll® BK 535** (50, 80 or 120 mm). With this 'sleeve on a roll', any geometry and size can be achieved. For round penetrations with standard diameters, the pre-fabricated **Ampacoll® Radon** sleeves can be used as an alternative.



## 6 Drainage

Ensure adequate drainage when applying on ceiling or flat components. Avoid water from accumulating on the membrane. If drainage is obstructed by protruding building structures such as walls, provide an additional floor drain. Tip: **Ampacoll® Radon** sleeves can be used as a temporary solution. To do this, fold the EPDM moulded part down into the drainage pipe/drainage hose and, if necessary, connect it tightly with the **Ampacoll® Profix** liquid adhesive.

Video:



# The building shell experts. Since 1946.

4136EJ/EX.YYFC(AR)1223

**Ampack IRE Ltd**  
Unit 36 Glenrock Business Park,  
Bóthar Na Mine,  
Galway, H91 AY28, IE  
P +353 91 394 467  
ampack@ampack.ie  
www.ampack.biz

**Ampack AG**  
Seebleichstrasse 50  
CH-9401 Rorschach  
T +41 71 858 38 00  
ampack@ampack.ch  
www.ampack.biz



@ampacken

